

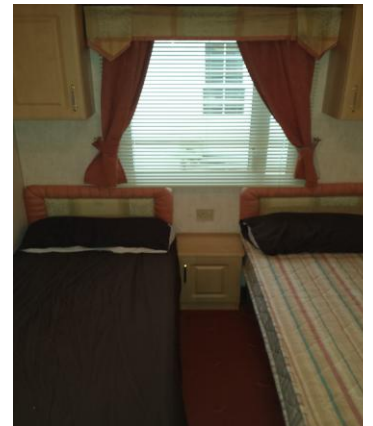


This lovely two-bedroom holiday home situated on the beautiful grounds of Nostell Priory Holiday Park is now available to rent on short or long-term basis. The holiday home can sleep up to six people; it has a Spacious Lounge/Dining area with plenty of seating. A kitchen fitted with oven, microwave and fridge/freezer. The Master bedroom has a double bed and wardrobe facilities it also has an en-suite. The second bedroom has two single beds and wardrobe facilities. The main bathroom is equipped with a shower and toilet. A pullout double bed is also available, built within the settee. The holiday home has double-glazing and central heating.

LIVING AND DINING ROOM



BEDROOMS/ENSUITE



KITCHEN/BATHROOM

